

*Kenton C. Ward, CFM*  
Surveyor of Hamilton County  
Phone (317) 776-8495  
Fax (317) 776-9628

Suite 188  
One Hamilton County Square  
Noblesville, Indiana 46060-2230

### **Map Correction-Field Verification**

**Drain Number:** 38

**Drain Length:** 2279

**Drain Name:** RJ Craig: Sparks Extension

**Change + / - :** +182

**Date:** 09-26-2011

**New Length:** 2461

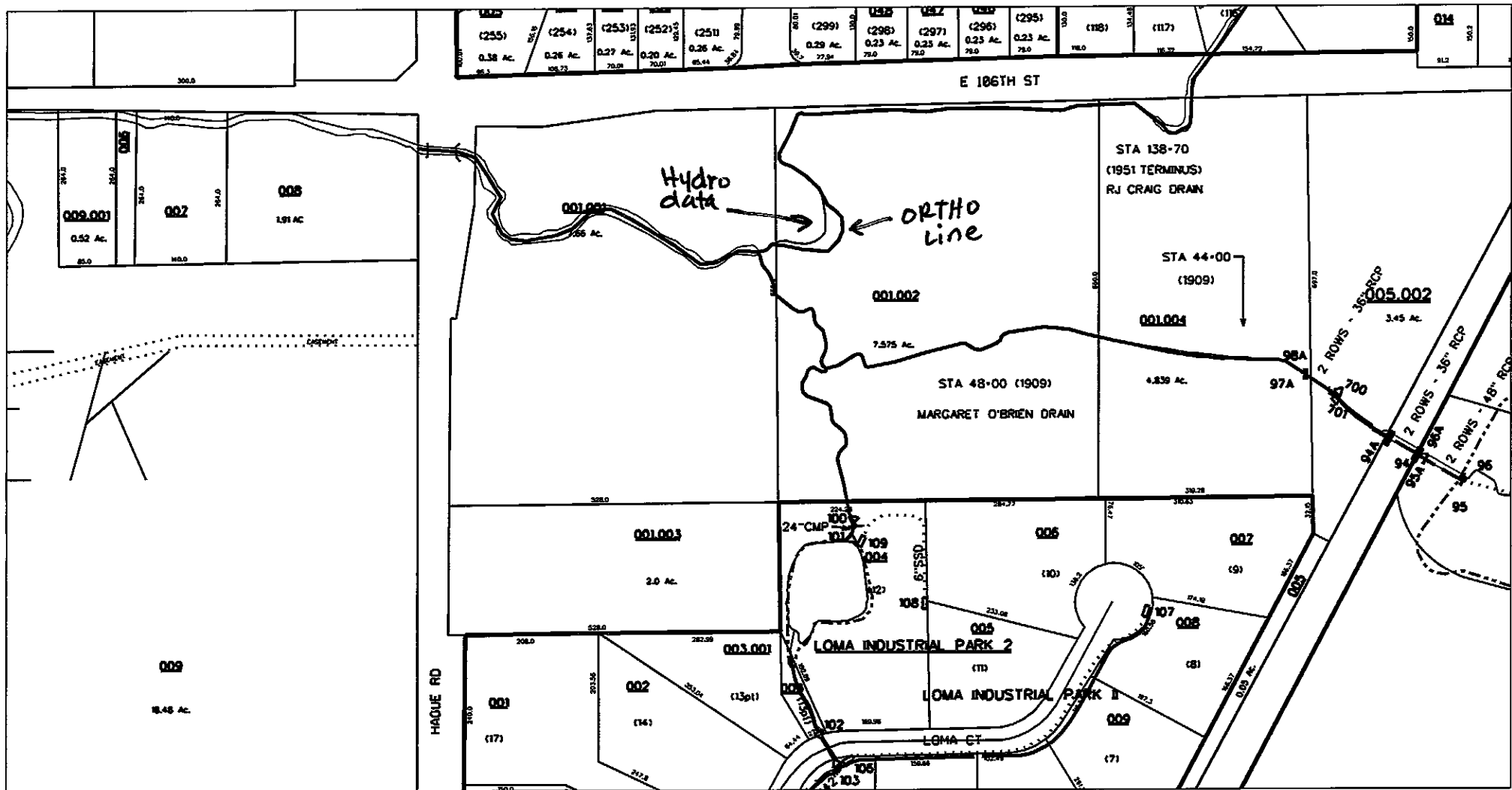
**Verified By:** SLM

---

#### **Notes & Sketch:**

The footage listed above is an adjustment from those listed in my report dated August 5, 2011 and approved by the Board on September 26, 2011. The RJ arm is now 1625 feet, the Margaret O'Brien Arm is now 272 feet and the Loma drain is 564 feet. The footages were adjusted to reflect a more accurate picture of the stream centerline as reflected in the 2011 photography. The measurements set out in the report were derived by measuring the Hydrographic centerlines collected from the 2004 orthophotos.

  
Suzanne L. Mills  
GIS Specialist



reg\_drain\_hc.dgn 9/26/2011 1:28:17 PM